



Too small to notice, to big to ignore!

Customer

Bengaluru-based garment manufacturer supplying to marquee brands in the US.

Product

Jeans

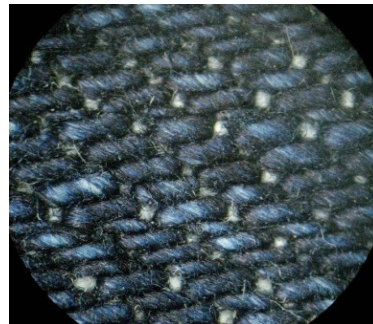
Definition of Problem

Fabric yarn damage around the seam after washing

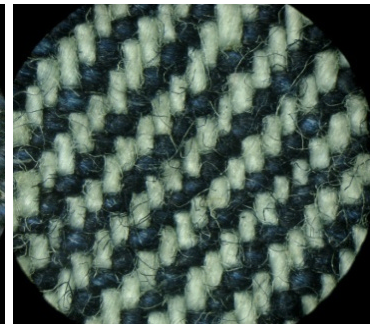


Analysis

The customer sent the jeans pant marking the problem. The garment was first magnified under 50X microscope to study structure.



Top-side view



Bottom-side view

The damage was seen only on the top side. In this twin stitch area, damage was only in the stitch using blue thread and not at all in stitch using yellow thread.



Picture of damaged seam



Closer view of the damage



Conclusion

The analysis of our Customer Service Department is that the damage was originally made by a damaged and blunt needle point. Such damages do not show up immediately on sewing. It is only on “agitation” during washing process that the damaged yarn reveals itself. When the customer repeatedly washes it after wear, other damaged yarn will also surface completely spoiling the aesthetic finish.



Stitch region magnified 50 times

Recommendation

- Never use sharp pointed needles for jean/denim sewing
- At all times use ball pointed needles (SES or SUK) for sewing denim fabrics.
- There is possibility for a needle to come into contact with machine part like Loooper, throat plate etc.,) get blunt while sewing over cross seams in general and particularly while sewing denim trousers. Hence it is better to give standard instructions to sewing area for checking the needle (Point/Tip) condition after every 4 hours of sewing.

Customer Feedback

Customer put in place a policy to check point of needle after every two hours of sewing and change after every four hours without waiting for needle to break. Rejections and downtime for this type of reason was completely eliminated. The number of needles used showed marginal increase but total cost of needles came down by using Beissel needles.

The above is a real-life case study. Even one such recommendation from Beissel can lead to huge cost savings and help completely recover the needle spend for an entire year! Beissel has a knowledge bank of such experience to share with the sewing industry. If you have encountered any sewing problems, please feel free to email or call our Manager, Technical Service – Mr G Jagannathan, at +91 99400 37006 or jegan@beisselneedles.com